

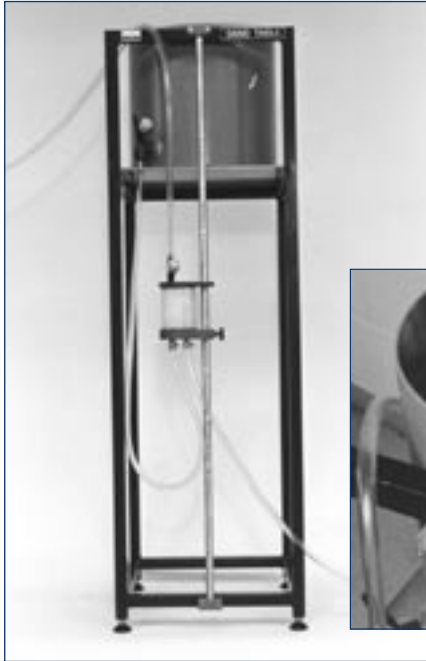
# armfield

## SOIL MOISTURE SUCTION SAND TABLE

**FEL4**

Provisional

*For the derivation  
of soil moisture  
characteristic curves*



### DESCRIPTION

The Armfield equipment consists of a free-standing circular tank filled with saturated sand (not supplied). Equilibrated soil samples placed on the sand are then subjected to a known variable suction range of 0-800mm of water. The suction is applied by means of a buried porous pipe and an associated sliding control chamber. In order to maintain the suction an uninterrupted low volume water supply is required.

A lightweight cover is provided to prevent evaporative water loss during experiments and the table is large enough to permit the simultaneous evaluation of several samples.

### SERVICES REQUIRED

*Cold water supply:*

*Connection to a permanent cold water supply*

*Drain (cold water):*

*Suitable laboratory drain required*

### INSTRUCTIONAL CAPABILITIES

*As a result of using this equipment students will be able to:*

- *understand the principles of water retentivity in terms of soil suction*
- *understand the relationship between water retentivity and soil*
- *derive soil moisture characteristic curves for a variety of soils.*

### ORDERING SPECIFICATION

*Soil moisture suction sand table comprising: sand table, 300mm diameter, with sliding suction control chamber giving tension range 0-800mm of water (using sandy-loam), complete with three soil sample retaining rings (80mm diameter), instructions and manual.*

### OVERALL DIMENSIONS

*Height: 1.3m*

*Width: 0.4m*

*Depth: 0.5m*

### SHIPPING SPECIFICATION

*Volume: 0.7m<sup>3</sup>*

*Gross weight: 100kg*

Armfield Limited  
Bridge House, West Street, Ringwood, Hampshire  
BH24 1DY, England

Tel: +44 (0)1425 478781 Fax: +44 (0)1425 470916

E mail: sales@armfield.co.uk

URL: <http://www.armfield.co.uk>

USA Office:

Armfield Inc.

436 West Commodore Blvd (#2)  
Jackson NJ 08527

Tel: (732) 928-3332 Fax: (732) 928-3542

E mail: info@armfieldinc.com